

EUROLAN TEST REPORT



Report No : **RDT-180801-03**

DATE : 2018/8/1

Description : Cat8 Channel (ISO)(7 m) Performance Test

Product : 16B-E8-09SL+13A-E8-03SL+19C-S8-23WT-R500

Measurements : NEXT
Return Loss
Insertion Loss

Standards : 1.ISO/IEC 11801-1 draft Date: 2017-05-10

2. The modular cabling configuration is according to T568B

Equipment : 1.FLUKE DSX-8000 VERSIV CABLE ANALYZER with DSX-CHA804
CAT 8 CHANNEL ADAPTER
2.FLUKE DSX-8000 VERSIV REMOTE with DSX-CHA804
CAT 8 CHANNEL ADAPTER
3.EUROLAN 19C-S8-23WT-R500 CAT 8.2 S/FTP 4-PAIR LSZH

Results : The results are shown in summary .

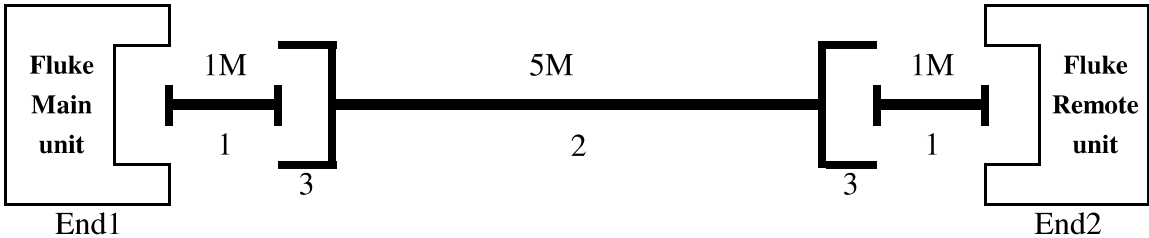
EUROLAN TEST REPORT



Report No : **RDT-180801-03**

DATE : 2018/8/1

Test Set up :



Item	Description	Manufacturer	Part Number
1	Horizontal Cable	Eurolan	Cat 8.2 S/FTP 19C-S8-23WT-R500
	PLUG	Eurolan	13A-E8-03SL
2	Horizontal Cable	Eurolan	Cat 8.2 S/FTP 19C-S8-23WT-R500
3	JACK	Eurolan	16B-E8-09SL



Cable ID: 16B-E8-09SL+13A-E8-03SL+19C-S8-23WT-R500 C8 CH 7M

Test Summary: PASS

Date / Time: 08/01/107 01:49:59 PM

Operator: EUROLAN

Model: DSX-8000

Headroom 1.0 dB (NEXT 36-45)

Software Version: V5.5 Build 2

Main S/N: 1726059

Test Limit: ISO11801 Channel Class I (+All)

Limits Version: V6.3

Remote S/N: 1726049

Cable Type: Cat 8 S/FTP

Calibration Start Date:

Main Adapter: DSX-CHA804

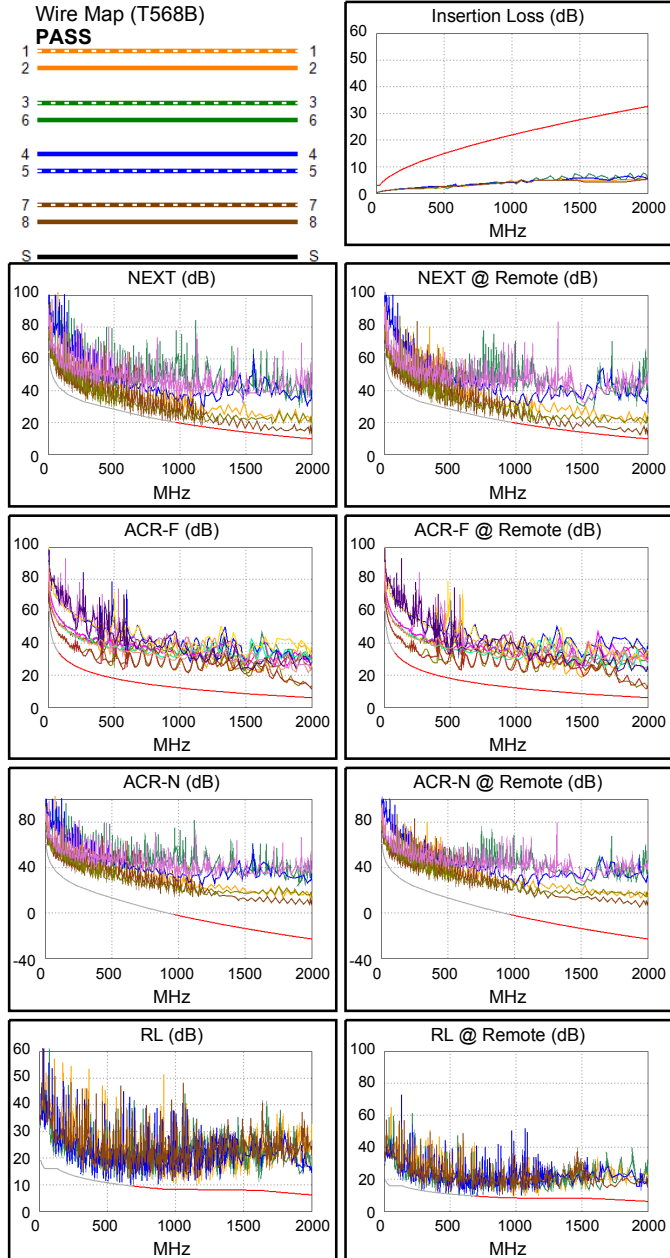
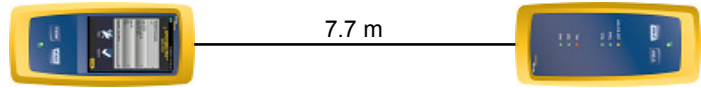
NVP: 73.0%

Main (Module): 12/04/106

Remote Adapter: DSX-CHA804

Remote (Module): 12/04/106

Length (m)	[Pair 12]	7.7
Prop. Delay (ns), Limit 169	[Pair 36]	35
Delay Skew (ns), Limit 16	[Pair 12]	0
Resistance (ohms), Limit 6.40	[Pair 78]	1.14
Resist. Unbal. (ohms), Limit 0.200	[Pair 12]	0.018
Resist. P2P Unbal. (ohms), Limit 0.100	[Pair 36-78]	0.011
Insertion Loss Margin (dB)	[Pair 36]	19.4
Frequency (MHz)	[Pair 36]	1476.0
Limit (dB)	[Pair 36]	27.4



Worst Case Margin Worst Case Value

PASS	MAIN	SR	MAIN	SR
Worst Pair	36-45	36-45	36-45	36-45
NEXT (dB)	1.6	1.0	3.0	1.8
Freq. (MHz)	1512.	1432.	2000.	1938.
Limit (dB)	13.7	14.5	9.6	10.1
Worst Pair	36	36	36	36
PS NEXT (dB)	1.8	1.9	5.0	4.6
Freq. (MHz)	1108.	1148.	2000.	2000.
Limit (dB)	15.2	14.7	6.6	6.6

PASS	MAIN	SR	MAIN	SR
Worst Pair	45-36	45-36	45-36	45-36
ACR-F (dB)	5.6	5.2	5.6	5.2
Freq. (MHz)	2000.	1974.	2000.	1974.
Limit (dB)	5.9	6.1	5.9	6.1
Worst Pair	36	36	36	36
PS ACR-F (dB)	8.5	7.8	8.5	7.8
Freq. (MHz)	2000.	1974.	2000.	1974.
Limit (dB)	2.9	3.1	2.9	3.1

PASS	MAIN	SR	MAIN	SR
Worst Pair	36-45	36-45	36-45	36-45
ACR-N (dB)	19.6	19.8	30.0	27.1
Freq. (MHz)	965.0	1048.	2000.	1938.
Limit (dB)	-1.5	-3.6	-23.1	-22.0
Worst Pair	36	36	36	36
PS ACR-N (dB)	18.8	19.3	30.7	30.3
Freq. (MHz)	904.0	904.0	1980.	1980.
Limit (dB)	-2.8	-2.8	-25.7	-25.7

PASS	MAIN	SR	MAIN	SR
Worst Pair	45	45	12	12
RL (dB)	2.5	2.3	3.7	3.6
Freq. (MHz)	671.0	671.0	1151.	1151.
Limit (dB)	9.6	9.6	8.0	8.0

Compliant Network Standards:
 10BASE-T 100BASE-TX 100BASE-T4
 1000BASE-T 10GBASE-T 25GBASE-T
 40GBASE-T ATM-25 ATM-51
 ATM-155 100VG-AnyLan TR-4
 TR-16 Active TR-16 Passive



Cable ID: 16B-E8-09SL+13A-E8-03SL+19C-S8-23WT-R500 C8 CH 7M

Test Summary: PASS

Date / Time: 08/01/107 01:49:59 PM

Operator: EUROLAN

Model: DSX-8000

Headroom 1.0 dB (NEXT 36-45)

Software Version: V5.5 Build 2

Main S/N: 1726059

Test Limit: ISO11801 Channel Class I (+All)

Limits Version: V6.3

Remote S/N: 1726049

Cable Type: Cat 8 S/FTP

Calibration Start Date:

Main Adapter: DSX-CHA804

NVP: 73.0%

Main (Module): 12/04/106

Remote (Module): 12/04/106

Remote Adapter: DSX-CHA804

	Worst Case Margin		Worst Case Value	
PASS	MAIN	SR	MAIN	SR
Worst Pair	78	12	78	78
TCL (dB)	16.6	16.8	16.6	17.0
Freq. (MHz)	1470.	15.5	1470.	1466.
Limit (dB)	3.0	29.8	3.0	3.0
N/A	MAIN	SR	MAIN	SR
Worst Pair			12-36	78-36
CDNEXT (dB)			14.5	14.0
Freq. (MHz)			897.0	961.0
Limit (dB)				
N/A	MAIN	SR	MAIN	SR
Worst Pair			36	36
CMRL (dB)			5.5	4.4
Freq. (MHz)			940.0	1050.
Limit (dB)				
PASS	MAIN	SR	MAIN	SR
Worst Pair	36	36	36	36
ELTCTL (dB)	7.7	8.2	7.7	8.2
Freq. (MHz)	1578.	1730.	1578.	1730.
Limit (dB)	3.0	3.0	3.0	3.0

