

# EUROLAN TEST REPORT



**Report No :** **RDT-180801-02**

**DATE :** 2018/8/1

**Description :** Cat8 Channel (ISO)(30 m) Performance Test

**Product :** 16B-E8-09SL+13A-E8-03SL+19C-S8-23WT-R500

**Measurements :** NEXT  
Return Loss  
Insertion Loss

**Standards :** 1.ISO/IEC 11801-1 draft Date: 2017-05-10

2. The modular cabling configuration is according to T568B

**Equipment :** 1.FLUKE DSX-8000 VERSIV CABLE ANALYZER with DSX-CHA804  
CAT 8 CHANNEL ADAPTER  
2.FLUKE DSX-8000 VERSIV REMOTE with DSX-CHA804  
CAT 8 CHANNEL ADAPTER  
3.EUROLAN 19C-S8-23WT-R500 CAT 8.2 S/FTP 4-PAIR LSZH

**Results :** The results are shown in summary .

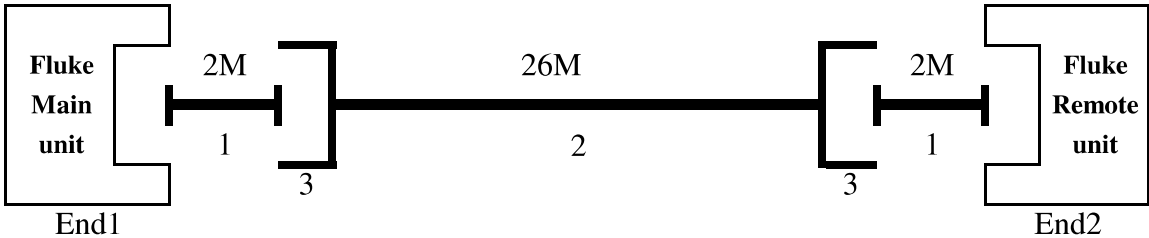
# EUROLAN TEST REPORT



Report No : **RDT-180801-02**

DATE : 2018/8/1

**Test Set up :**



Item	Description	Manufacturer	Part Number
1	Horizontal Cable	Eurolan	Cat 8.2 S/FTP 19C-S8-23WT-R500
	PLUG	Eurolan	13A-E8-03SL
2	Horizontal Cable	Eurolan	Cat 8.2 S/FTP 19C-S8-23WT-R500
3	JACK	Eurolan	16B-E8-09SL



**Cable ID: 16B-E8-09SL+13A-E8-03SL+19C-S8-23WT-R500 C8 CH 30M**

**Test Summary: PASS**

Date / Time: 08/01/107 01:39:47 PM

Operator: EUROLAN

Model: DSX-8000

Headroom 4.3 dB (NEXT 36-45)

Software Version: V5.5 Build 2

Main S/N: 1726059

Test Limit: ISO11801 Channel Class I (+All)

Limits Version: V6.3

Remote S/N: 1726049

Cable Type: Cat 8 S/FTP

Calibration Start Date:

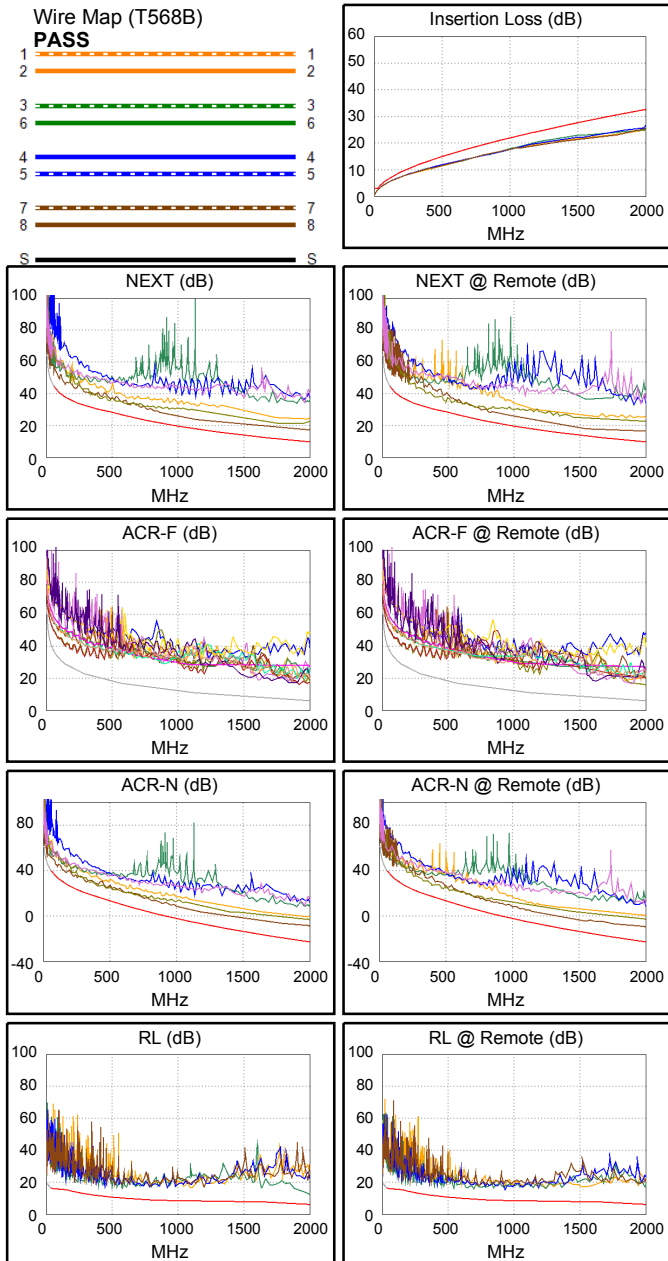
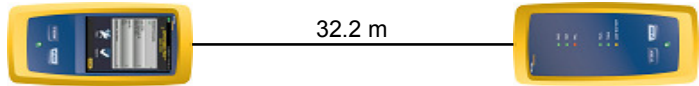
Main Adapter: DSX-CHA804

NVP: 73.0%

Main (Module): 12/04/106

Remote Adapter: DSX-CHA804

Length (m)	[Pair 12]	32.2
Prop. Delay (ns), Limit 169	[Pair 36]	148
Delay Skew (ns), Limit 16	[Pair 36]	1
Resistance (ohms), Limit 6.40	[Pair 78]	3.88
Resist. Unbal. (ohms), Limit 0.200	[Pair 12]	0.019
Resist. P2P Unbal. (ohms), Limit 0.130	[Pair 36-78]	0.015
Insertion Loss Margin (dB)	[Pair 45]	6.1
Frequency (MHz)	[Pair 45]	2000.0
Limit (dB)	[Pair 45]	32.7



**Worst Case Margin Worst Case Value**

PASS	MAIN	SR	MAIN	SR
Worst Pair	36-45	36-45	36-45	36-45
<b>NEXT (dB)</b>	4.8	4.3	7.2	6.4
Freq. (MHz)	1448.	1444.	1968.	1972.
Limit (dB)	14.4	14.4	9.9	9.8
Worst Pair	36	36	36	36
<b>PS NEXT (dB)</b>	6.3	6.0	8.3	7.8
Freq. (MHz)	1548.	1448.	1968.	1964.
Limit (dB)	10.4	11.4	6.9	6.9

PASS	MAIN	SR	MAIN	SR
Worst Pair	45-36	78-36	45-36	36-45
<b>ACR-F (dB)</b>	9.8	9.2	9.8	9.5
Freq. (MHz)	1918.	1610.	1918.	2000.
Limit (dB)	6.3	7.8	6.3	5.9
Worst Pair	36	45	36	45
<b>PS ACR-F (dB)</b>	10.3	9.9	10.5	10.0
Freq. (MHz)	1882.	1908.	1922.	1910.
Limit (dB)	3.5	3.4	3.3	3.3

PASS	MAIN	SR	MAIN	SR
Worst Pair	36-45	36-78	36-45	36-45
<b>ACR-N (dB)</b>	9.5	9.2	13.9	13.1
Freq. (MHz)	141.5	513.0	1996.	1998.
Limit (dB)	30.2	12.9	-23.0	-23.0
Worst Pair	36	36	36	36
<b>PS ACR-N (dB)</b>	10.0	10.5	15.6	15.0
Freq. (MHz)	410.0	700.0	1966.	1964.
Limit (dB)	13.4	3.3	-25.5	-25.4

PASS	MAIN	SR	MAIN	SR
Worst Pair	36	36	36	45
<b>RL (dB)</b>	5.0	5.9	6.3	6.6
Freq. (MHz)	293.0	395.0	1996.	927.0
Limit (dB)	12.8	11.6	6.2	8.3

Compliant Network Standards:  
 10BASE-T      100BASE-TX      100BASE-T4  
 1000BASE-T      10GBASE-T      25GBASE-T  
 40GBASE-T      ATM-25      ATM-51  
 ATM-155      100VG-AnyLan      TR-4  
 TR-16 Active      TR-16 Passive



**Cable ID: 16B-E8-09SL+13A-E8-03SL+19C-S8-23WT-R500 C8 CH 30M**

**Test Summary: PASS**

Date / Time: 08/01/107 01:39:47 PM

Operator: EUROLAN

Model: DSX-8000

Headroom 4.3 dB (NEXT 36-45)

Software Version: V5.5 Build 2

Main S/N: 1726059

Test Limit: ISO11801 Channel Class I (+All)

Limits Version: V6.3

Remote S/N: 1726049

Cable Type: Cat 8 S/FTP

Calibration Start Date:

Main Adapter: DSX-CHA804

NVP: 73.0%

Main (Module): 12/04/106

Remote (Module): 12/04/106

Remote Adapter: DSX-CHA804

	Worst Case Margin		Worst Case Value	
<b>PASS</b>	MAIN	SR	MAIN	SR
Worst Pair	12	78	36	36
<b>TCL (dB)</b>	11.2	11.5	20.0	18.1
Freq. (MHz)	17.0	40.8	1984.	1992.
Limit (dB)	29.1	22.6	3.0	3.0
<b>N/A</b>	MAIN	SR	MAIN	SR
Worst Pair			12-36	12-36
<b>CDNEXT (dB)</b>			16.4	16.2
Freq. (MHz)			1434.	1484.
Limit (dB)				
<b>N/A</b>	MAIN	SR	MAIN	SR
Worst Pair			36	36
<b>CMRL (dB)</b>			7.3	5.8
Freq. (MHz)			1061.	856.0
Limit (dB)				
<b>PASS</b>	MAIN	SR	MAIN	SR
Worst Pair	78	78	78	78
<b>ELTCTL (dB)</b>	7.6	7.5	7.6	7.5
Freq. (MHz)	1904.	1906.	1904.	1906.
Limit (dB)	3.0	3.0	3.0	3.0

