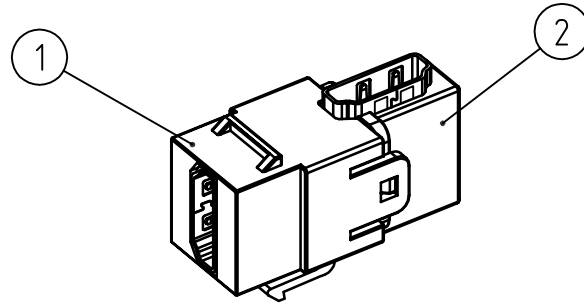
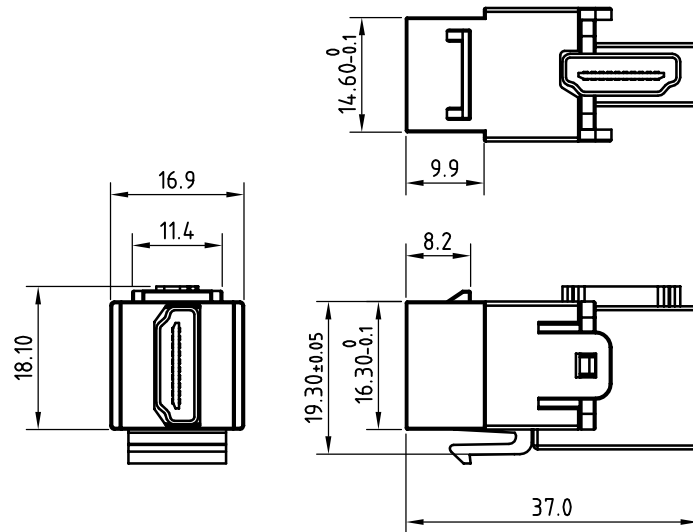


# ISOMETRIC VIEW



# ASSEMBLY DIMENSION



REVISIONS				
ZONE	REV	DESCRIPTION	DATE	DRAWN

### NOTES:

- ELECTRICAL CHARACTERISTICS :
  - RATING CURRENT: 0.5A;
  - RATING VOLTAGE: 40V;
  - CONTACT RESISTANCE: 30m OHMS MAX.
  - INSULATION RESISTANCE:
    - a:UNMATED: 100M OHMS MIN.AT 500 VDC
    - b:MATED: 10M OHMS MIN.AT 150 VDC
  - DIELECTRIC WITHSTANDING VOLTAGE: 500VAC/1MINUTE
  - OPERATING TEMPERATURE: -20°C--+85°C
  - STORAGE TEMPERATURE: -20°C--+85°C
  - OPERATION /STORAGE HUMIDITY:95% OR LESS.
- MECHANICAL CHARACTERISTICS :
  - INSERTION FORCE : 44.1N(MAX)
  - EXTRACTION FORCE: 9.8N(MIN):39.2N(MAX)
  - MATING CYCLE: 5000 CYCLES:
  - CONTACT PULL OUT FORCE: 5.9N/PIN(MIN)
  - PLASTIC MATERIAL: ABS 94V-0.
- PCB: FR-4 Tin PLATING (LEAD FREE)
- CONN: HDMI 19P FEMALE.
  - INSULATION: ENGINEERING THERMOPLASTIC BLACK;
  - CONTACT: COPPER ALLOY, GOLD OVER NICKEL PLATED;
  - SHELL: BRASS, GOLD FLASH PLATING
  - HOUSING MOLDING PVC

P1		P2	
1	---	1	---
2	---	2	---
3	---	3	---
4	---	4	---
5	---	5	---
6	---	6	---
7	---	7	---
8	---	8	---
9	---	9	---
10	---	10	---
11	---	11	---
12	---	12	---
13	---	13	---
14	---	14	---
15	---	15	---
16	---	16	---
17	---	17	---
18	---	18	---
19	---	19	---
SHELL	---	SHELL	---

NO.	PART NAME	PART NUMBER	Q'TY
①	HDMI HOUSING	LP3406	1
②	HDMI 19PIN F/F	LEFF000078-ROHS	1

UNLESS OTHERWISE SPECIFIED: TOLERANCES		PROJECT ID 16B-HD-04WT		<b>EUROLAN</b>	
DECIMAL	ANGULAR	FILE	DATE		
~20 ±0.1mm	±0°50'			Multimedia Connector	
OVER 20 ~50 ±0.15mm				SIZE	DRAWING NUMBER
OVER 60 ~ ±0.2mm					PART NUMBER
MATERIAL	DRAWN				REV
SURFACE	CHECK			SCALE 1:1	
FINISH	APPROVED			UNIT mm	SHEET