

# INSTRUCTION MANUAL

FIGURE 1

Insert keystone jack into the panel lower opening with latch facing up.

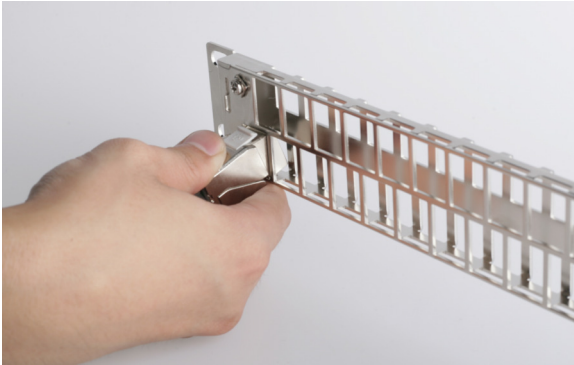


FIGURE 2

Insert keystone jack into the panel upper opening with latch facing down.

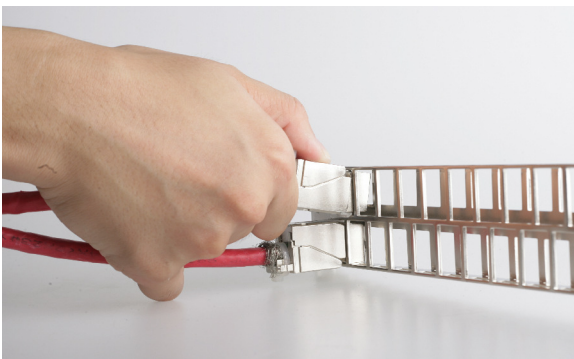


FIGURE 3

If required, screw the drain wire to one of the two grounding lugs on rear of panel properly grounding the panel according to client request.  
(DRAIN WIRE NOT INCLUDED).



FIGURE 4

Mounting the cable management to rear of panel.

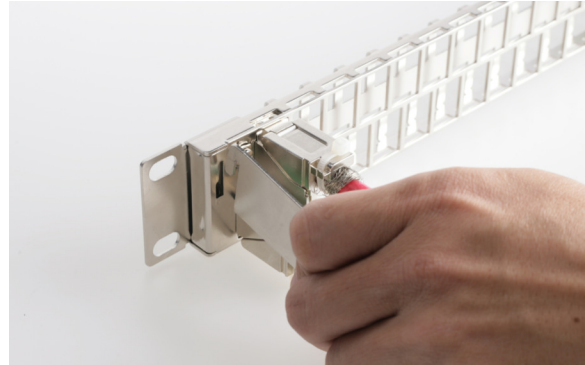
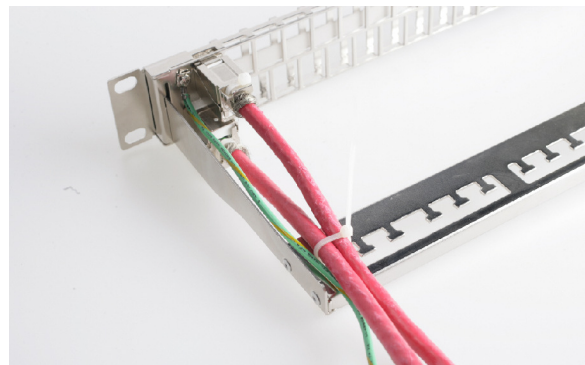


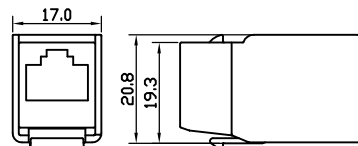
FIGURE 5

Using one cable tie to wrap two cables together with a T-shape lug on the wire management. Do not over tighten the cable tie to distort the cables.



## Attention:

1. Please be mentioned the jack width is subjected to 17mm, the height is subjected to 20.8mm



2. Plug latches are back on to another in the two rows.

