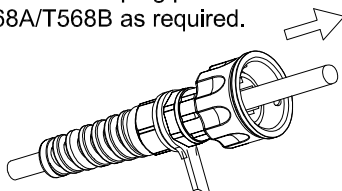


Industrial connector INSTALLATION SHEET UTP/FTP

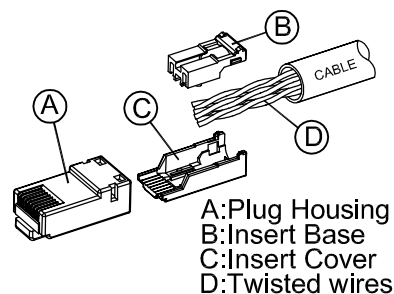
STEP 1:

- * Insert the wire through the parts as shown.
- * Terminate the plug per the T568A/T568B as required.



MODULAR WIRING CONFIGURATION		
COLOR CODE	T568B	T568A
White-Blue	5	5
Blue	4	4
White-Orange	1	3
Orange	2	6
White-Green	3	1
Green	6	2
White-Brown	7	7
Brown	8	8

ASSEMBLY COMPONENTS



STEP 2:

- * Arrange twisted wires (Part D) to insert base (Part B) as shown in Figure 1

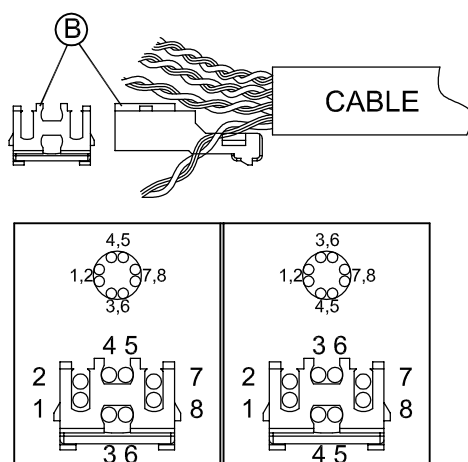
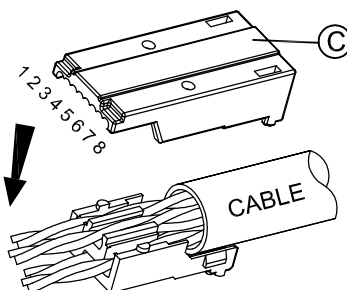


Figure 1 : T568B Wiring

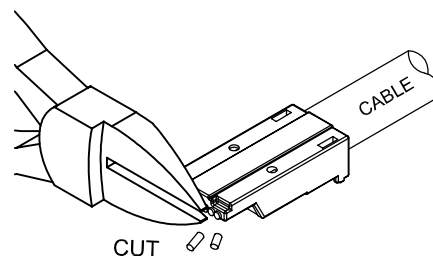
STEP 3:

- * Snap insert cover (Part C) to Step 2 assembly.
- * Assembly completed when hearing click.



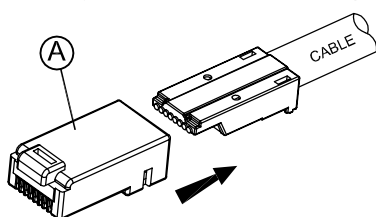
STEP 4:

- * Cut all conductors off along with the edge of Insert cover.

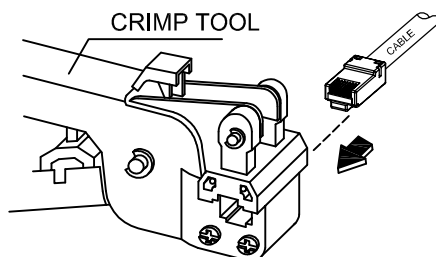


STEP 5:

- * Insert plug housing (Part A) to Step 4 assembly thoroughly.
- * Assembly completed when hearing click.

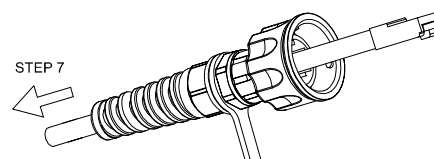


STEP 6:



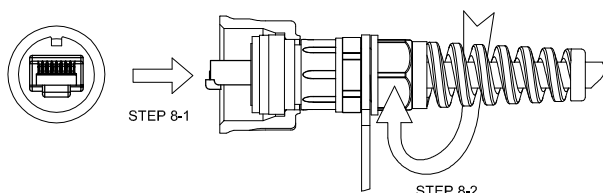
STEP 7:

- * Pull the plug back into the housing.



STEP 8:

- *8-1 Confirm that the plug is in the correct position.
- *8-2 Twist the back portion to lock the cable Gland.



ASSEMBLY COMPLETED

