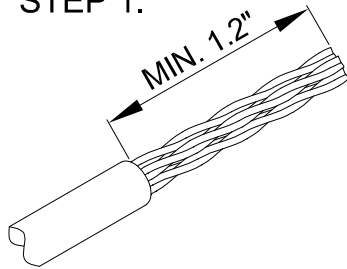


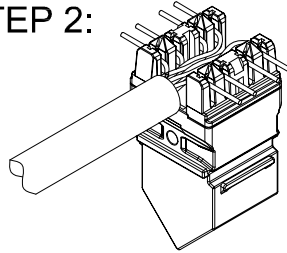
# INSTRUCTION SHEET

## STEP 1:

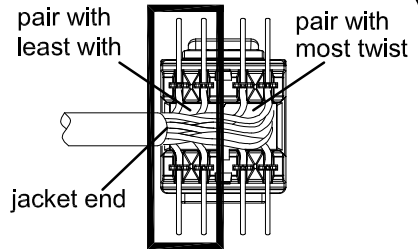


Strip off at least 1.2 inches of jacket from end of cable.

## STEP 2:

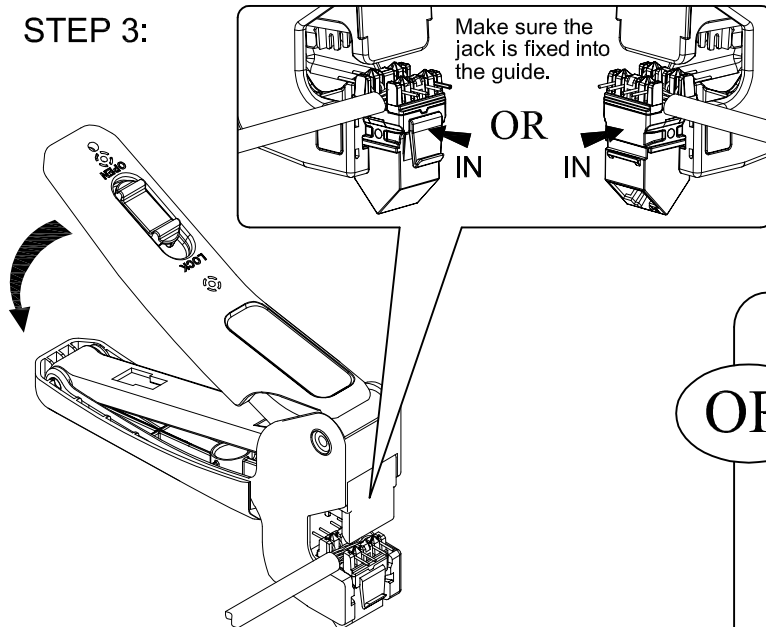


Press the wires through the projecting portion of terminals until fixed. (T568A/T568B)



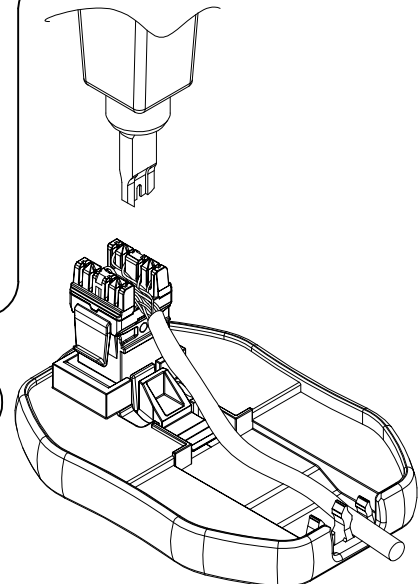
The pair with the least twist should be inserted into the IDC closest to where the jacket ends.

## STEP 3:



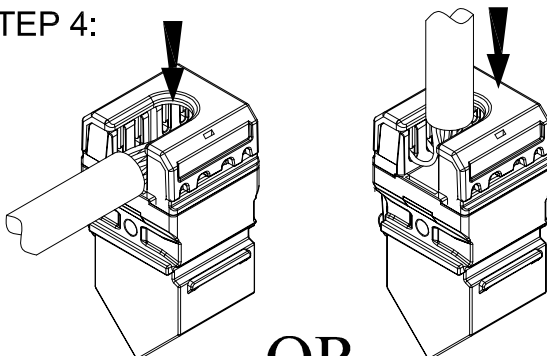
Insert Angled Jack into the guide with either directions. Press Tool to terminate the Angled Jack and cut off the excess wires.

OR



Place Angled Jack on Palm. Terminate wires with 110 punch down tool. Make sure the tool cuts off the excess wires.

## STEP 4:



Place cap on Angled Jack and press to make sure it is fully seated. The cap opening allows the cable to enter the jack from side or rear.